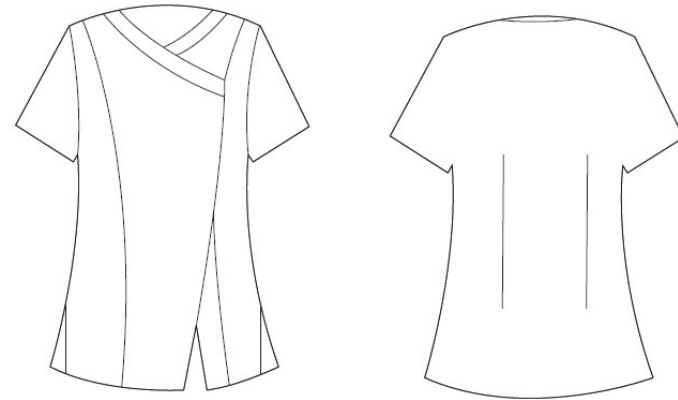


**PR686****'CAMELLIA' BEAUTY AND SPA TUNIC**

CARTON	PACK	NO. SKU'S
12	3	30



Colour	Pantone	C	M	Y	K
Black	0	0	0	0	100
Hot Pink	214c	0	100	24	4
Turquoise	312	89	0	11	0

**Fabric**

100% Polyester Plain weave with, 'Inherent stretch capabilities', 185gsm

**Colours**

Black, Black with Hot Pink zip, Black with Turquoise zip

**Sizes**

6, 8, 10, 12, 14, 16, 18, 20, 22, 24

**Features**

- Beauty and Spa tunic with cross over neckline and asymmetric zip front
- Short sleeve with vented cuff
- Side vents
- Princess seams with topstitch detail for flattering fit
- Easycare
- Made from OEKO-TEX® Standard 100 Fabric

**Country of Origin**

China

**Carton Dimensions**

60 cm x 44 cm x 17 cm

**Carton Weight**

6.20 kg approx.

**VAT Code**

6211 43 1000

Size	6	8	10	12	14	16	18	20	22	24
<b>Chest actual "</b>	34	36	38	39	41	43	46	48	50	53
<b>Chest actual cm</b>	85	90	95	100	105	110	116	122	128	134
<b>Chest to fit cm</b>	76	81	86	91	97	102	107	112	117	122
<b>Call size</b>	XXS	XS	S	M	L	XL	2XL	3XL	4XL	5XL
<b>EU Size</b>	34	36	38	40	42	44	46	48	50	52

**Marketing Description**

The 'Camellia' Beauty and Spa Tunic has an understated elegance with a cross over neckline and asymmetric zip front. The vented cuff on the short sleeves and the side vents ensure ease of movement whilst the princess seams with added topstitch detail create a very flattering fit. In Easycare fabric the 'Camellia' Tunic is ideal for Beauty and Spa environments.

